

proMIX™ 101

Wirsbo "pro" Series Controls
Simple controls for sophisticated systems

Outdoor reset—it enhances both comfort and economy. But how do you provide a simple and powerful reset package for your radiant project without breaking the bank?

**With the Wirsbo proMIX 101
That's how!**



**The NEW
proMIX**

RADIANT FLOORS
COMFORT HEATING

The Wirsbo proMIX 101 provides weather responsive one-temperature reset control for your radiant heating projects. It's simple, intuitive and easy to use. Monitoring weather conditions and using a simple three-way mixing valve, the proMIX 101 resets a single water temperature for radiant heating and simultaneously protects the boiler from flue gas condensation. The proMIX 101 interacts with the boiler control to provide intelligent energy management which saves your customer money.

The proMIX 101 represents cost-effective and reliable weather responsive mixing and works seamlessly with the rest of the Wirsbo "pro" Series to provide complete system control.

Why you'll like it:

- Maximizes the comfort and economy of any radiant system
- Easy-to-pipe floating action mixing valve controls radiant supply water temperature
- Automatically protects boiler against damage from condensing flue gasses

- Easy outdoor reset—selects its own reset curve based on programming and outdoor temperature
- Simple wiring—no additional relays needed for stand alone installation
- Total compatibility with the rest of the Wirsbo "pro" Series Controls for additional radiant floor, boiler or snow melt control

Why your customers will love it:

- Maximizes comfort and system economy
- Invisibly maintains an even comfort level without temperature swings
- Automatic system watchdog using warm weather shutdown
- Allows versatility in the design of a home's overall heating plan

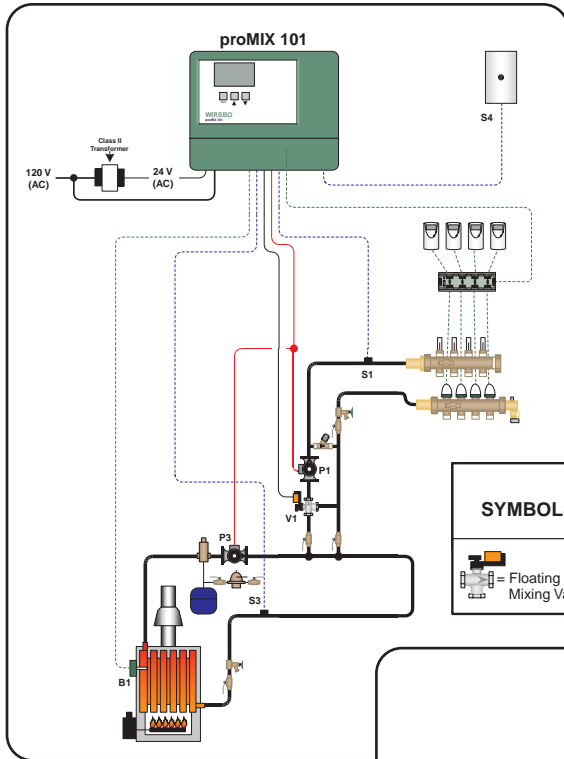
The Wirsbo proMIX 101 delivers comfort and economy to your customer, leaving them warm, happy and worry free!



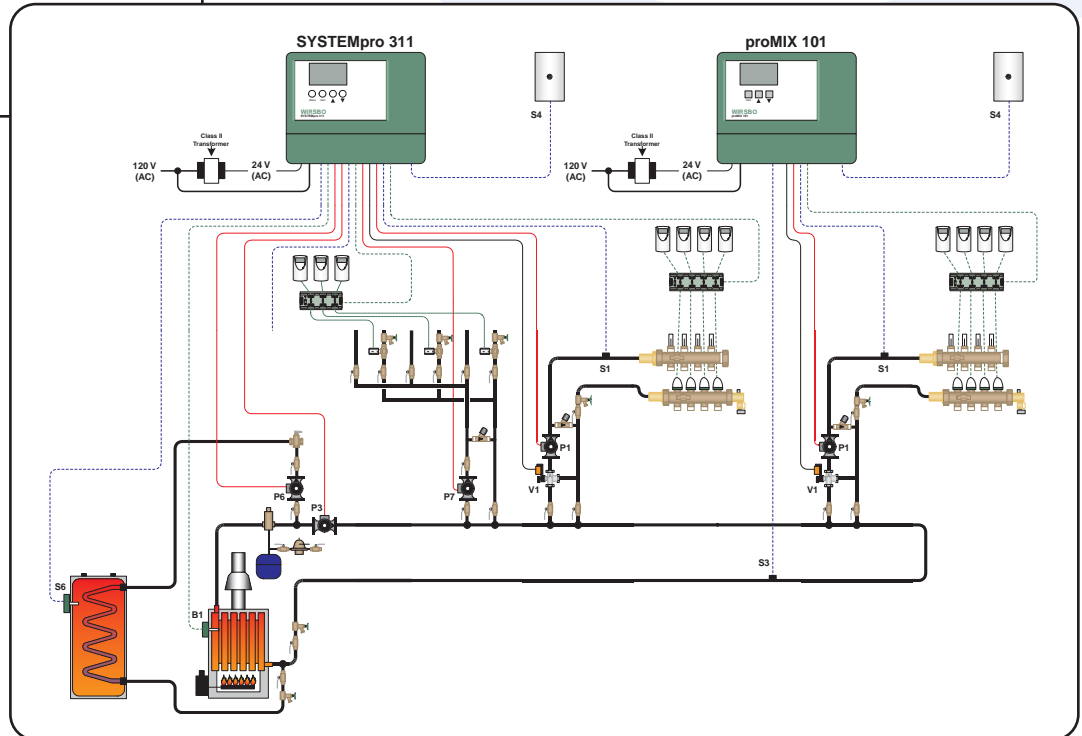
Quick Feature Reference

Wirsbo proMIX™ 101

- Boiler Enable (with boiler protection)
- One-temperature, floating action mixing (Outdoor reset or Set-point mode)
- Stand alone mixing control or temperature expansion module for the SYSTEMpro™ 311



SYMBOLS	= Pump	= Air Separator & Expansion Tank w/ fill	= Zone Valve	= Ball Valve	= Flow Check
= Floating Action Mixing Valve	= Tempering Valve	= Heat Exchanger	= Pressure By-Pass Valve	= Globe Valve	= Drain Valve



RADIANT FLOORS
COMFORT HEATING

Product Info

Product Name	Part Number
Wirsbo proMIX 101	A3040101
1" Floating Action Mixing Valve (CV 10)	A3131000
1 1/4" Floating Action Mixing Valve (CV 19)	A3131250
1 1/2" Floating Action Mixing Valve (CV 29)	A3135000



Contact your local
Wirsbo wholesaler
for pricing and
availability.

Uponor Wirsbo
5925 148th STREET WEST
APPLE VALLEY, MN 55124

TEL: 800-321-4739
FAX: 952-891-1409
www.wirsbo.com

Copyright © 2002 Uponor Wirsbo, Printed in the United States

Uponor

PM1015/02